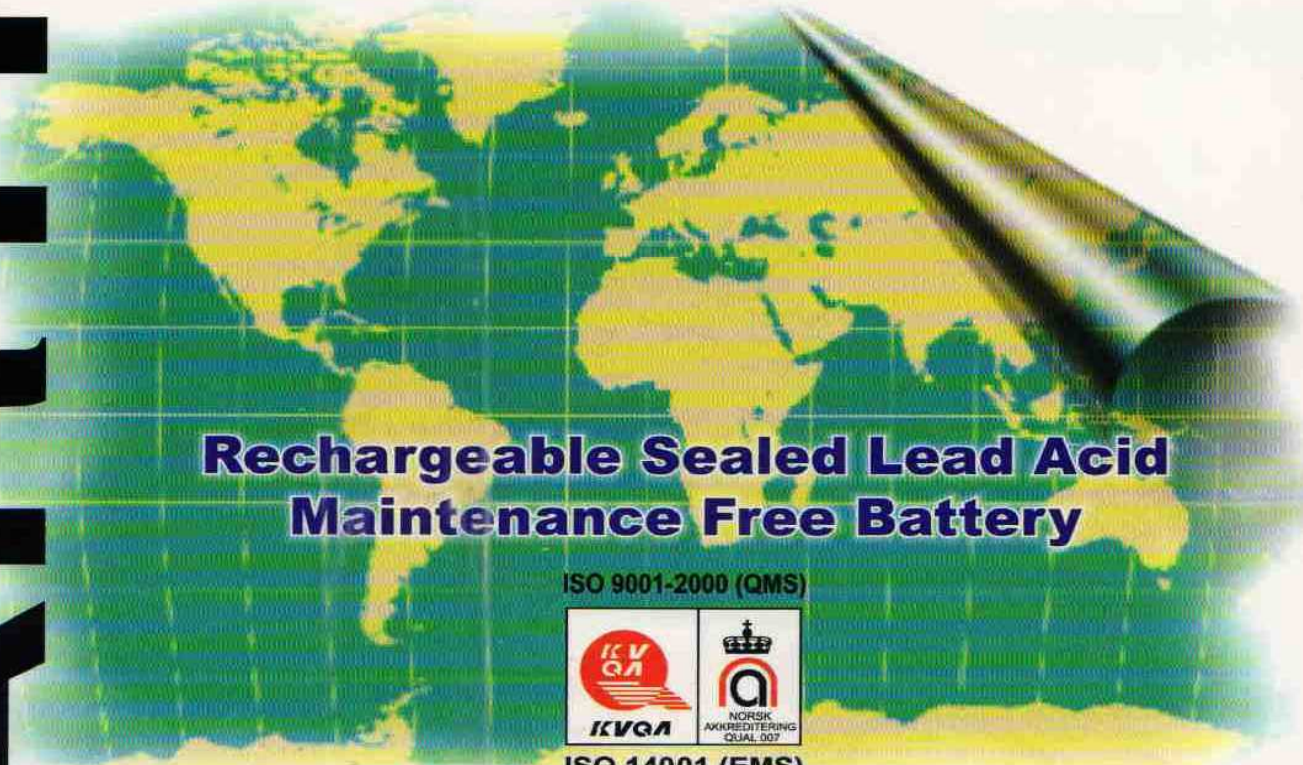
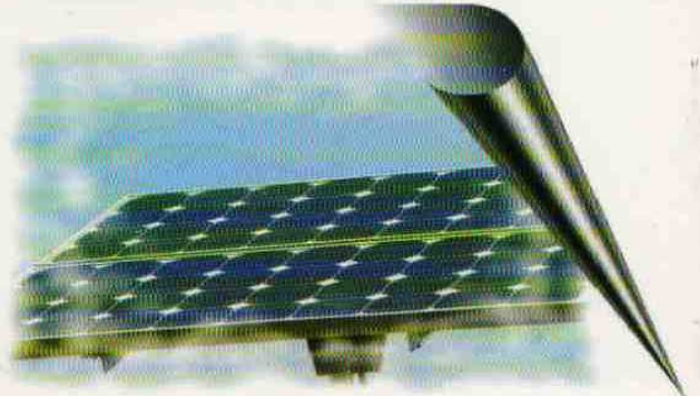
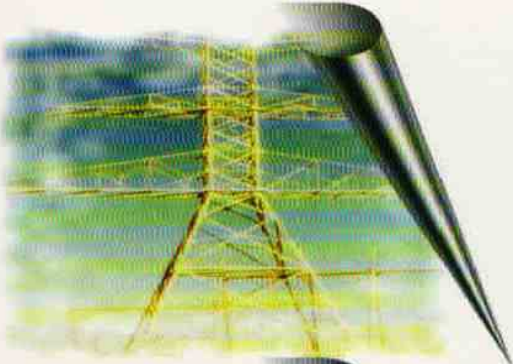


ARTHEON

ARTHEONTM
POWER FOREVER



**Rechargeable Sealed Lead Acid
Maintenance Free Battery**

ISO 9001-2000 (QMS)



ISO 14001 (EMS)

www.artheonelec.com

Artheon Group :

Encompasses several companies in the field of Telecom, Information Technology and Renewable Energy (solar & wind), Finance etc.

Skansoft technologies (www.skansoft.com)

EnableM Technologies (www.enablem.com)

Communicate2 (www.communicate2.com)

Sharda Inventions (www.shardainventions.com)

Wilcom Technologies (www.wilcom.co.in)

6v & 12v Series

Model No.	Nominal Voltage (V)	Rated Capacity @ 20 hr (Ah)	Outline Dimensions mm				AH Capacity @ 20°C (60°F)			
			Length	Width	Case Height	Total Height	10 Hr 1.75 vpc	8 Hr 1.75 vpc	5 Hr 1.75 vpc	3 Hr 1.75 vpc
AE 4.5 - 6	6	4.5	70	48	102	108	3.85	3.73	3.40	3.15
AE 3.3 - 12	12	3.3	134	67	61	67	3.00	2.96	2.75	2.55
AE 4.5 - 12	12	4.5	90	70	101	107	4.20	4.05	3.83	3.38
AE 7.2 - 12	12	7.2	151	65	95	99	6.50	6.31	5.75	5.25
AE 9.0 - 12	12	9.0	151	65	95	99	7.60	7.20	6.80	6.40
AE 12 - 12	12	12	151	99	96	101	10.8	10.5	9.75	9.30
AE 18 - 12	12	18	181	76	167	167	16.7	16.2	15.3	13.8
AE 26 - 12	12	26	177	168	126	126	24	23.3	22.8	20.7
AE 45 - 12	12	45	196	165	171	171	41.8	39.6	37.5	33.5
AE 65 - 12	12	65	350	167	179	179	62.0	59.5	55.0	48.75
AE 80 - 12	12	80	259	169	208	211	76.0	72.0	68.0	60.0
AE 100 - 12	12	100	330	170	215	220	90.0	86.4	79.2	73.1
AE 150 - 12	12	150	480	170	240	240	135	130	119	110
AE 200 - 12	12	200	524	240	216	244	180	173	158	146

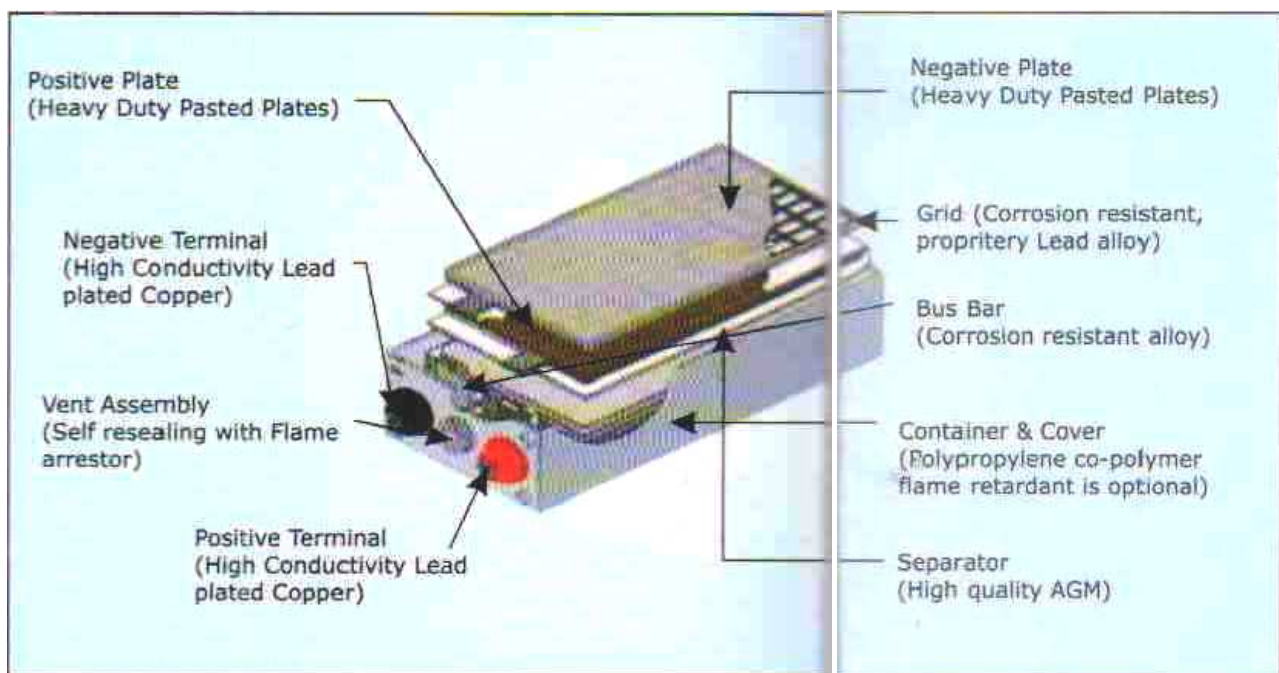
2v Series

Model No.	Voltage	Capacity Ah 10 Hr	Dimensions				Weight	Terminal	Maximum Discharge Current	Maximum Charge Current	Internal Resistance
			Length	Width	Height	Total Height					
AE 2 - 100	2	100	171	72	226	230	6.5	F10	500	20.0	10
AE 2 - 150	2	150	171	101	208	228	8.0	F10	750	30.0	0.8
AE 2 - 200	2	200	171	106	327	368	15.0	F10	1000	40.0	0.8
AE 2 - 300	2	300	171	151	327	368	20.0	F10	1500	60.0	0.7
AE 2 - 400	2	400	171	210	327	368	27.0	F10	2000	80.0	0.7
AE 2 - 500	2	500	171	241	327	368	32.0	F10	2500	100.0	0.6
AE 2 - 600	2	600	175	302	327	368	41.0	F10	3000	120.0	0.6
AE 2 - 800	2	800	175	411	327	368	57.0	F10	3000	160.0	0.6
AE 2 - 1000	2	1000	175	479	327	368	85.0	F10	4000	200.0	0.5
AE 2 - 1500	2	1500	352	407	328	383	100.0	F10	4000	300.0	0.5
AE 2 - 2000	2	2000	349	490	328	383	132.0	F10	4000	400.0	0.4
AE 2 - 3000	2	3000	351	712	328	383	201.0	F10	4000	600.0	0.3

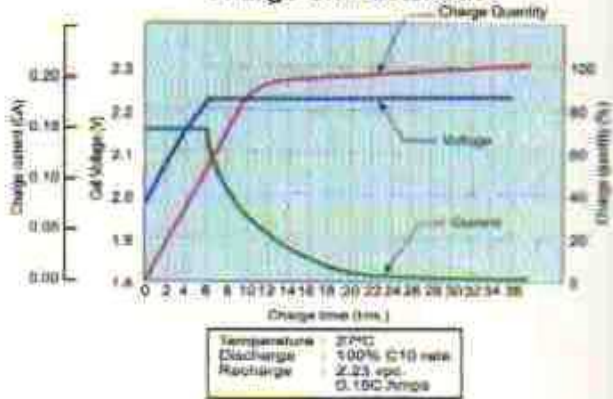


Product Features :

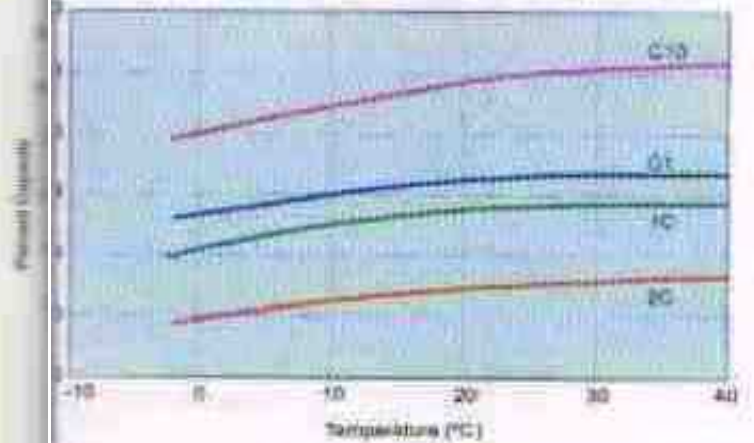
- For both cyclic and standby use.
- Uniform plate formation for consistent capacity.
- Reduced internal resistance for superior performance.
- Non-spillable, useable in any position.
- Maintenance free and High Shelf Life.
- Low self-discharge.
- Gas recombinant system.
- Low pressure venting system.
- Heavy duty grids.
- Long service life.
- ABS container and cover.
- Wide operating temperature range most suited to Indian conditions.



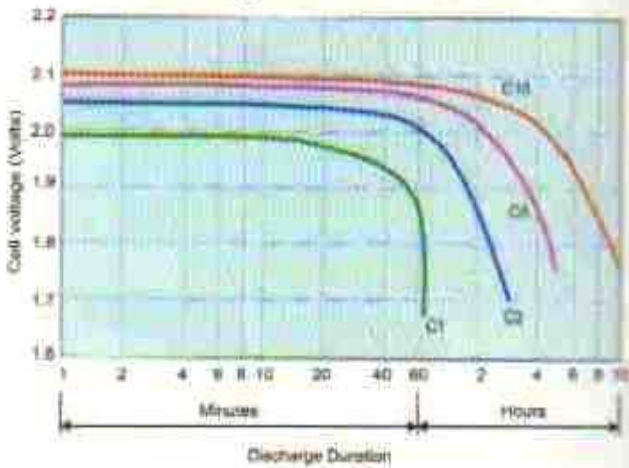
Charge Characteristics



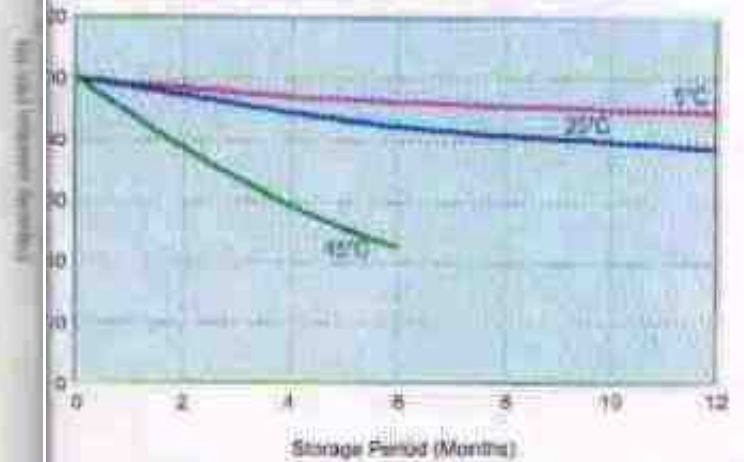
Effect of Temperature on Capacity



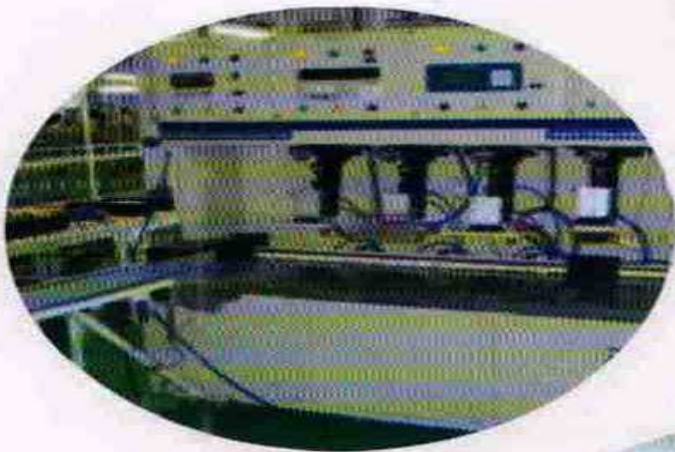
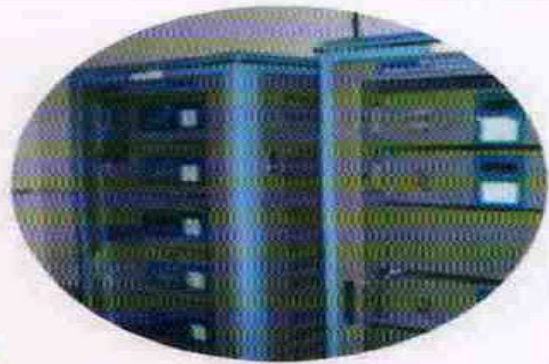
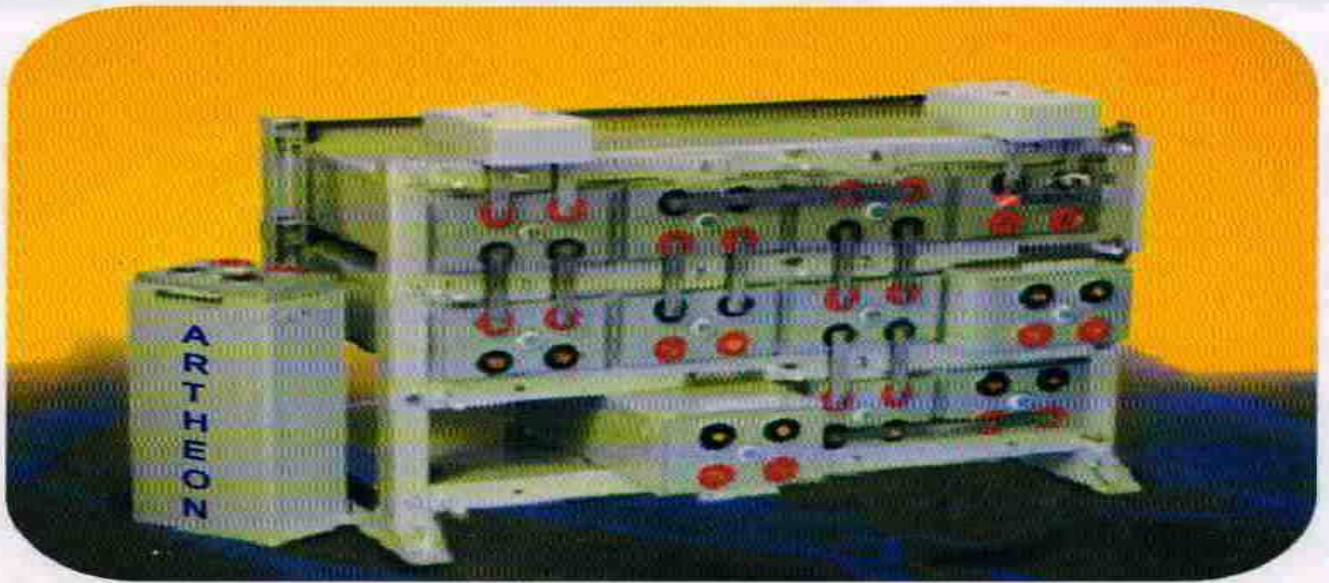
Discharge Performance Curves



Capacity Retention Characteristics

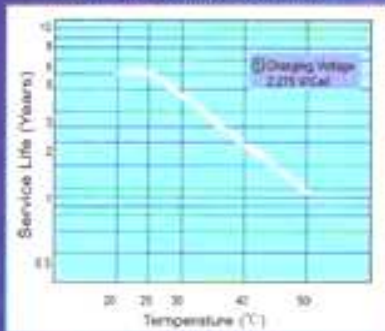


- Supplementary Charge is recommended before capacity retention ratio drops less than 30%.

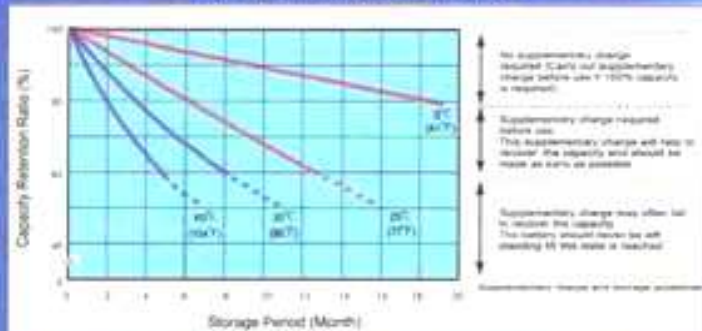


Characteristics Curve

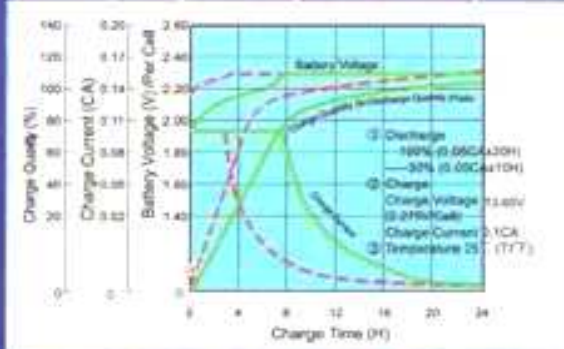
Trickle (or Float) Service Life



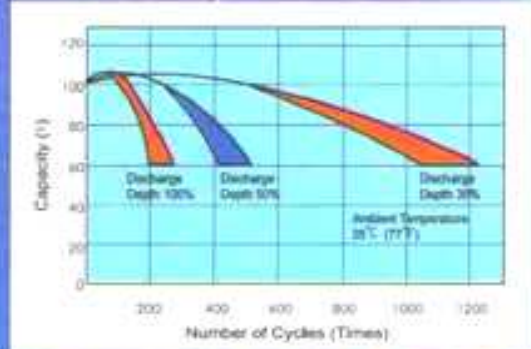
Capacity Retention Characteristics



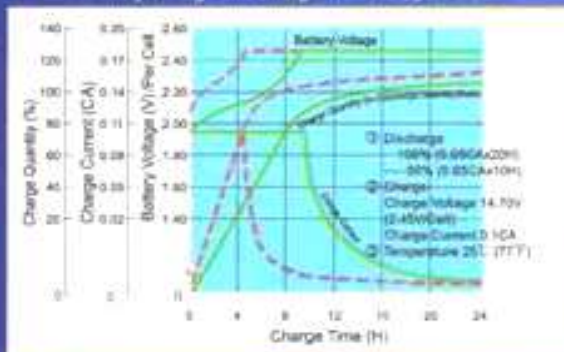
Battery Voltage and Charge Time for Standby Use



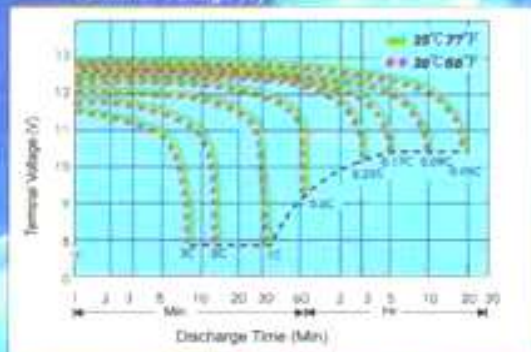
Cycle Service Life



Battery Voltage and Charge Time for Cycle Use



Terminal Voltage (V) vs Time



Charging Procedures

Application	Charge Voltage (V/Cell)		Max. Charge Current
	Standby	Alkaline Ships	
Cycle Use	25 (77°F) 2.40	2.40-2.50	0.2C
Standby	25 (77°F) 2.25	2.25-2.30	

Discharge Current VS. Discharge Voltage

Final Discharge Voltage (V/Cell)	1.75	1.70	1.60	1.50
Discharge Current (A)	0.20(A)	0.20(A)+0.50	0.50(A)+1.00	(A)+1.00

Certifications





ARTHEON



ARTHEON ELECTRONICS LIMITED

National Sales Office: S-34, Okhla Industrial Area, Ph-II, New Delhi-110020

Tel:- +91-11-40516480, Fax:- +91-11-40516479

Email:- smf@artheonelec.com

Corp Office: 201, Sumer kendra, P.B Marg, Worli, Mumbai-400018

